



A Breath of
FRESH AIR



FAIRFLOW VENTILATION

The Organization :

FAIRFLOW group Started operations as FAIRFLOW & CONTROLS in the year 1993 as a partnership company with a core focus on manufacturing a wide range of Flow Measurement Equipments like Orifice, Venturi & Flow Nozzle, Manifold, Needle Valves Prover tank, Level indicator, canopy junction box and Ball Valves. Through Constant Perseverance and zest for success, the company has today become synonymous with premier quality, reliability and trust amongst its global clientele.

FAIRFLOW has always believed in growth through innovation, diversification. Building on this belief, the company diversified into FAIRFLOW VENTILATIONS in 2011 under the prolific leadership of Managing Partner Mr. Hasmukh Patel who has contributed significantly towards steering the company promising new business horizon of Aesthetic Air - Conditioning - HVAC.

Mr. Hasmukh Patel hails with a profound experience of 25 years in various reputed companies and in diverse Industrial sectors like HVAC-ADP, Automobiles, Air Conditioning and process industries. He has 8 Yrs experience in manufacturing of (air distribution product), lab furniture, Air terminal device used in centralized air conditioning, ventilation and clean room.

He is life time member of Indian society of Heating, Refrigeration & Air Conditioning (ISHRAE). He is President of ISHRAE Vadodara Chapter for 2016-17.

Guided by his visionary approach, the company FAIRFLOW VENTILATION is looking to become a leading manufacturer of HVAC- Air Distribution products- Grills, Diffusers, Dampers, Sound Attenuators, Louvers, Cable Trays, Return Air Riser, HEPA Terminal box, Electrical Control Panel box, canopy etc. Through this extensive product range, the company will aptly gratify the centralized air conditioning needs of shopping Malls, multiplexes, Theaters, Educational Institutes, Hospitals, Hotels, Metro Stations, Airports, Sports Stadiums, Health Centers, Tunnels, Warehouses and several other public or private Spaces.

The Company boasts of a state-of-the-art manufacturing facility that is spread over 11000 Sq. Ft. and is equipped with the latest CNC Press Break Machines, NC Shearing Machines, Mechanical Power Presses and numerous other cutting – edge equipments that give FAIRFLOW the power to manufacture world class products at competitive rates.

The company has always dedicated itself to thoroughly understanding the specific needs of its clients and fulfills them with excellent quality products. The company's skilled professional force, efficient administrative staff, and comprehensive business acumen of its management are collectively progressing Fairflow to scale new frontiers of success.

Vision :

Ensure Value of every customer through quality craftsmanship and lasting solutions delivered by skill professionals.

Our Mission :

FAIRFLOW a company where we strive to live up to the industry standards in our services to customers. We are committed to providing the highest level of professionalism, service response, and quality workman ship. Hire, develop and retain employees who are committed to our growth & customer satisfaction.

Quality :

FAIRFLOW Ventilation is constantly committed to achieving total customer satisfaction through rigorous innovations and constant improvement of its products. The company is known for its quality workmanship, exemplary customer service and always strives to deliver high quality products to its clients. The company also fully adheres to all the global quality protocols to ensure a timely and cost effective production output.

Why you should choose “FAIRFLOW”

- I) We provide Best Quality, on time delivery, flexible Quantity, with best Rate.
- II) Geographically we are at centre of India, ease to Contact & minimum Lead time.
- III) State of Art Manufacturing facility Spread over 11000 sq ft. area.
- IV) We give One Stop Solution having distributorship for “Ostberg” for fan, “Armcell” for insulation and “kalflex” for Flexible Duct.



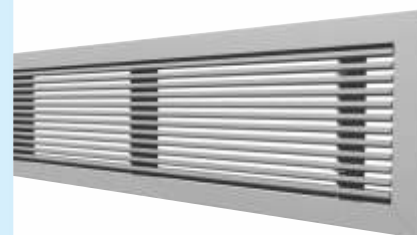
Adjustable Blade Grill

- Single or Double deflection grill used for supply and return air with 25mm border type frame.
- Available as standard with horizontal front row blade.
- Manufactured from aluminium extrusion, powder coated white.
- Standard fixing system by Screws or concealed fixing on demand.
- Accessories: Opposed blade damper and equalizing deflectors.
- Optional Extra:
 - Natural anodized finish on request.



Linear Grill

- Fixed bar return air grille with standard border frame of 16 mm & 5 mm blade.
- Manufactured from aluminium extrusion, powder coated white.
- Available with 0°, 15°, 30° & 45° degree Blade deflection.
- Standard fixing system by screws or concealed fixing on demand.
- Accessories: Opposed blade damper and equalizing deflectors.
- Available sizes: 100x100 mm to 1200x1200 mm.
- Optional extra:
 - Natural anodized finish on request.
 - Removable core on request.



Linear Bar Grill

- Linear fixed bar grille for supply and return air with 3 mm bar profile.
- Manufactured from aluminium extrusion, powder coated white.
- Available with 0°, 15°, 30° or 45° degree blade deflection.
- Standard fixing system by screws or concealed fixing on demand.
- Accessories: Opposed blade damper.
- Available sizes: 100 x 100 mm to 1800 x 600 mm.
- Optional extra:
 - Natural anodized finish on request.



Linear Floor Grill

- Linear fixed from floor grille used for supply and return air.
- Manufactured from aluminium extrusion, powder coated white.
- No fixing system as standard, drop in floor opening or mounting frame.
- Accessories: Opposed blade Damper.
- Sizes: 300 x 300 mm to 600 x 600 mm.



Egg Crate Grill

- Egg create grille used for return air.
- Manufactured from aluminium powder painted white.
- Screw fixing system as standard.
- Available sizes: 100 x 100 to 600 x 600 mm.
- Accessories: Opposed blade damper and plenum Box.
- Optional extra:
 - Natural anodized finish on request.



Non Vision air Transfer Grill

- Inverted "V" type horizontal blades are fixed rigidly to the frame. • Blades are spaced at a Pitch of 15 mm. • Grilles are made to withstand heavy use to which door grilles are subjected. • Frame is fabricated to suit door thickness of 30 mm to 60 mm.
- Structure Provides around 55% free area for air transmission. • Manufactured from Aluminium extrusion, powder painted white.
- Fixing: Either with screw system or without screws by sealant. • Fixed combination between the following dimensions are available : LxH from: 200 x 100 to 1200 x 600mm.



Acoustic Transfer Grill

- Manufacture from Aluminium extrusion, powder, coated white.
- Ideal for duct, door or wall mounting for transmission loss.
- Fixing: Screw system.
- Available size: 325 x 125 mm to 1225 x 445 mm



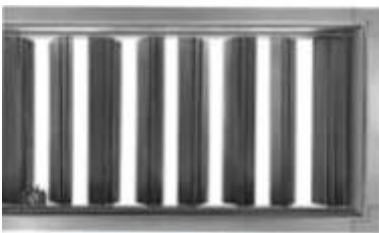
Exhaust Grill

- Return air grill with perforated core or expanded Aluminium mesh.
- Standard border frame of 16 mm.
- Manufactured from Aluminium and Galvanized steel or Aluminum only.
- Standard fixing system by screw or concealed fixing on demand.
- Accessories: Opposed blade damper and equalizing deflectors.
- Available sizes: 100 x 100 mm to 1200 x 1200 mm.
- Option extra: Powder painted white.



Combination Grill with Pre Filter

- Manufactured from Aluminium and SS to suit flush mounted ceilings as well in clean Room.
- With the arrangement of filter inbuilt. (Washable Pre Filter)
- Ideal applications such as hospital, pharmaceuticals.
- Available sizes: 300 x 300 to 1200 x 1200.



Collar Damper

- Opposed Blade Damper With Adjustable Blade.
- Used with grilles, Diffuser etc.
- Material of construction available in Al black Anodized.
- Blades Can Be Adjustable : LN key/ Screw driver.



Continuous Slot Diffuser

- Low profile linear slot diffuser with sliding directional blades.
- Manufactured from Aluminium, power coated white.
- Fixing by hidden screw through slot opening or directly to the plenum outlet or duct neck.
- Dimensions: from 1 to 8 slot, from 300 to 1800mm length in.
- One piece, continues lengths are available on demand
- Accessories: End caps Damper and plenum Box
- Optional extras: -90 mitered corners in section of 300 mm -Plenum box insulated or non-insulated -Hit & Miss Damper.



Linear Diffuser

- Linear ceiling diffuser with fixed deflectors.
- Manufactured from aluminium, power coated white.
- Fixing by hidden screw through slot opening or directly to the plenum outlet or duct neck.
- Dimensions: from 1 to 8 slot, 1 or 2-ways deflection with standard length of 600 mm 1200 or 1800 mm length in one piece, continues length are available on demand.
- Accessories: End caps, Damper & plenum box
- Optional Extras:
 - Plenum box insulated or non-Insulated.



Perforated Face Diffuser

- Manufactured from aluminium powder coated.
- No fixing system as standard, mounted to plenum box or rigid duct, diffuser face 595 x 595 mm (for ceiling T-panel 600 x 600 mm).
- Available Neck Dimensions: 225,300,375,450 mm.
- Accessories: Opposed blade damper.



Laminar Flow Diffuser

- Laminar Flow Diffuser are manufactured from aluminium to suit flush mounted ceilings.
- Available Sizes: 600 x 600, 900 x 600 and 1200 x 600
- Ideal for application such as Hospital, Pharmaceutical, Micro-Electronics or Alimentation industry.
- Including top entry plenum and opposed blade damper with operation level through from face as standard.



Multi cone Ceiling Diffuser

- Louver faced ceiling diffuser used for supply and return air.
- Manufactured from stamped or extrusion aluminium powder coated.
- Removable core for neck mounting into the duct.
- Available sizes: Neck size of 150 x 150 to 1200 x 600 mm.
- Standard deflection : 4-Way or I-Way, 2-Way and 3-way.
- Accessories: Opposed blade damper.
- Optional extra:
 - Top entry plenum box-Anti-Smug frame code AS.
 - Anodized satin finish or powder painted white.



Ceiling Diffuser - Plaque Type

- Architectural ceiling diffuser used for supply and return air.
- Manufactured from aluminium, powder coated white.
- Removable core for neck mounting into the duct.
- Available sizes: Neck size of 150 x 150 to 450 x 450 mm with face size of 595 x 595 for 600 x 600 mm T-bar panel replacement.
- Standard openings: Single or double slot.
- Accessories: Opposed blade damper.



Ceiling Diffuser Adjustable Blade

- Aluminium supply diffusers for variable duty with adjustable curved blades.
- Manufactured in extruded aluminium powder coated white.
- Available sizes: 250 x 250 to 600 x 600 other sizes on demand.
- Standard fixing: By Screw through front face or concealed fixing.
- Flow pattern: 4-Way or I-Way, 2-Way and 3-way on demand.
- Optional extras:
 - Opposed blade damper



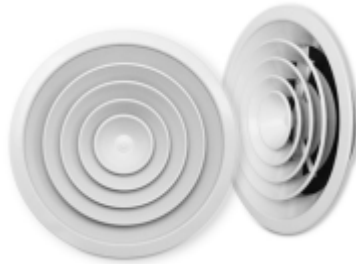
Drum Jet Diffuser

- Drum louver diffuser with adjustable deflectors, used for long throw and high air volume, adjustable up to a max of 30° inclination
- Manufactured from aluminium powder coated to white
- Fixing with screws through front face frame
- Available sizes: No. 906 to 3510
- Accessories: Opposed blade dampers



Displacement Diffuser

- High capacity displacement diffusers.
- Ideal for cooling and ventilation of large spaces with minimum energy.
- Double perforated steel, powder coated white.
- Duct mounted from the top or bottom to facilitate installation.
- Accessories: Volume control damper.
- Available option: Rectangle, circular, semi circular, quadrant constructions.
- Available inlet sizes: Ø160 to Ø630 mm



Ceiling Diffuser

- Circular ceiling diffuser with fixed deflector cones
- Manufactured from aluminium, powder coated white.
- Ideal for supply or return air application with round ducting.
- Adjustable central for heating and cooling application.
- Available sizes: Neck size Ø200 and Ø300 mm



Hi Flow Jet Diffuser

- Circular multi-cone jet diffuser for supplying air to large areas.
- The diffuser's throw and distribution pattern are adjustable.
- Manufactured from aluminium, powder coated white.
- Fixing: with screw or pop rivets to a round duct or combined with a mounting plate.
- Available sizes: 250, 315, 380 and 450 mm.
- Accessories: with mounting plate for more than one.



Spot Diffuser

- Spot jet nozzles for supply air into large areas
- Manufactures from aluminium, powder coated white.
- Available sizes: Ø4", Ø8", Ø12" & Ø16"
- Spot jet includes volume control damper as standard.
- Mounted directly to the Flange or wall mounted by screws through the front frame.



Jet Nozzel

- Long throw nozzels, aesthetic design with decorative ring, used for spot cooling, adjustable in all directions up to a max of 40° degree.
- Manufactured from aluminium, powder coated white.
- Fixing with concealed screws.
- Available sizes: Ø200, 250, 280, 315, 350 and 400 mm.



Return Air Valve

- Manufactured from CRCA steel powder coated
- Spring Fixing System as standard
- Available in 4 sizes: ø100 to ø125, ø150, ø200
- Accessories: Mounting frame and plenum box



Volume Control Damper Aluminium

- Aluminium Extruded Blade, Side, Top.
- Aerofoil Blade Aluminium Section 100 Mm Wide, Opposed Blade Operation.
- Gear Operated Fully Enclosed And Stainless Steel Seal Gaskets.
- Available Size - 150 X 150 To 1200 X 1200 mm.



Volume Control Damper

- Volume control damper.
- For a smooth control of the air volume with locking quadrant or motor-base and extended shaft.
- Manufactured from galvanized steel sheet frame and blades.
- Available with reinforced single skin or aerofoil blades.
- Damper blade axes are set into self lubricating bronze bearings.
- Lateral Seals and damper blade rubber seals to assure low leakage.
- Available sizes: 150 x 150 mm to 1200 x 1200 mm.



Round Butterfly Damper Two Flap

- Round butterfly balancing damper.
- Used for balancing air flows in round plenum inlets or outlets.
- Manufactured from aluminium / galvanized sheet as standard.
- Operated manually with central screw.
- Available sizes: 0100 to 0400 mm.
- Optional Extra:
 - Extended casing sleeve.



Spigot Damper Butterfly Damper

- Round duct balancing damper and round duct shut - off damper.
- Used for continuous regulation of air flow.
- Manufactured from galvanized steel sheet as standard.
- Can be operated manually with quadrant or with actuator.
- Available sizes: Ø100 to Ø800 mm.



Circular Volume Control Damper

- Manufactured from GI Sheet.
- Suitable for round Duct connection.
- Available Size: Dia 150mm to 500mm.



Pressure Regulating Damper-Motorized

- Manufactured from high quality Aluminium alloy extrusion.
- Operated with sense of pressure and regulate by Actuator.
- Suitable for Return And Supply Air application.
- Available Size: 300x300, 1000x1000 mm.



Pressure regulating Damper

- Manufactured from high quality aluminium alloy extrusion, powder coated white.
- The blade pivot mechanism incorporates nylon bushes and stainless steel pins.
- Balanced aerofoil blade exhaust air application.
- Available size: 300 x 300 to 1000 x 1000 mm.



Fire and Smoke Damper

- Fire and smoke damper.
- Manufactured from 16 gauge galvanized steel blade and frame.
- Heavy duty interlocking blades and fully enclosed blade linkage mechanism.
- Contrasted with stainless steel lateral blade seals and self lubricating sintered bronze bushed.



Hit-miss Damper

- Manufactured from GI Sheet and Al Sheet.
- Suitable for Volume regulator for Continuous Slot Diffuser.
- Available Size: 1 to 6 Slot, 38mm to 230mm.



External Weather Louvers

- Manufactured from high quality aluminium alloy extrusion, powder coated white.
- Fixing Screws through Front face frame.
- Available sizes: 150 x 150 to 1200 x 1200 mm.
- Louvers are complete with bird screen.
- Optional
 - Natural anodizes finish on request.



Sand Trap Louvers

- Sand trap louvers ideal for preventing sand entering ventilation system.
- Manufactured from heavy duty aluminium frame and blades.
- Integral collection chute.
- Available sizes: 300 x 300 mm to 1200 x 1200 mm.



Sound Attenuator (Round Duct Silencer)

- Round sound attenuators.
- Manufactured from heavy gauge Galvanized steel sheet.
- Accoustic insulation made of fibreglass, tissue protected by aluminium perforated plate.
- Attenuators above Ø500 have guiding fins and attenuating centre pod to decrease turbulence and increase attenuation.
- Attenuators have flat ended flanges with threaded inserts to facilitate installations.
- Available in Ø300 to Ø1200mm.



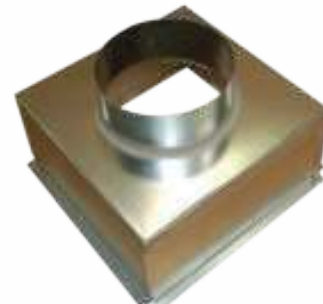
Sound Attenuator (SQ/Rectangular duct silencer)

- Square and rectangular sound attenuators.
- Manufactured from heavy gauge galvanized steel sheet.
- Attenuating splitters are constructed from press formed frame.
- Accoustic insulation made of fibreglass, tissue protected by aluminium perforated plate.
- Attenuator casing is welded and sealed with mastic to assure low casing leakage.
- Available sizes from 300 x 300 mm to 2000 x 1200 mm.



Plenum Box

- Manufactured from GI Sheet.
- Used in Exhaust & Supply air
- Will help for pressure reduction and air stream balance by using with Diffuser and CSF.
- Extra - Insulation can be available on request.
- Size from - 300 to 450 neck with Dia 250 Duct connection.



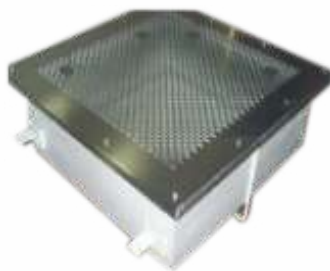
Plenum with Spigot

- Manufactured from high quality Aluminium, GI sheet.
- Used for both Exhaust and Supply air
- Can be used in conjunctions with diffuser for pressure reduction and air stream balancing
- Optional- extra insulation can be provided on request.



Return Air Riser

- Manufactured From MS, Aluminium, SS and GI.
- Operated from Front with Available in SS, MS And Aluminium Perforated Sheet.
- Ideal applications such as hospital and pharmaceuticals for return air with inbuilt filter Arrangement.



Terminal Filter Housing

- Manufactured From MS, Aluminium, SS and GI.
- Sizes: As per Filter Standard.
- Two type Housing: Side Entry and Top entry for Duct Connection.
- Operated from below the false Ceiling with available in SS, MS and Aluminium Perforated Sheet.
- Ideal applications such as hospital, pharmaceuticals.



Laminar Air Flow Diffuser

- Manufactured From MS, Aluminium, SS and GI.
- Operated from below the false Ceiling with Available in SS, MS And Aluminium Perforated Sheet.
- Ideal applications such as hospital, pharmaceuticals.
- Available with Arrangement of Fixing OT Light and UV light.



Cable Tray

- Steel: As per IS: 2062/1079.
- Galvanising: As per IS: 2629/4759.
- Available in Ladder Type, Perforated Cable Trays, Raceways, Wire ways & Accessories.
- Availability in MS Powder Coated, Hot dipped Galvanized, Stainless Steel & Aluminium.



Variable Air Volume

- Round Variable Air Volume terminal units with and without external acoustic cladding.
- Manufactured from galvanized mild steel.
- Operated with belimo compact controller as standard.
- Available sizes: 0125, 160, 200, 315 & 400 mm.
- Optional Extra.
- Outlet Silencer.
- Pneumatic and pressure controlled controllers
 - Compact controller with LON communication.



Flexible Duct - Un Insulated / Insulated

- Meets UI 181 & NFPA 90A–90B fire codes
- Unique moisture resistant core construction will not unravel when cut eliminates wastes of materials.
- Light weight.
- Available size 4 to 20 inches ID.
- Insulated and non insulated both flexible duct are available.
- Complies with NFPA standards 90A & 90B.
- Corrosion resistant steel wire helix.
- Fully lined for efficient air delivery.
- Authorised distributor of "KAAL FLEX".



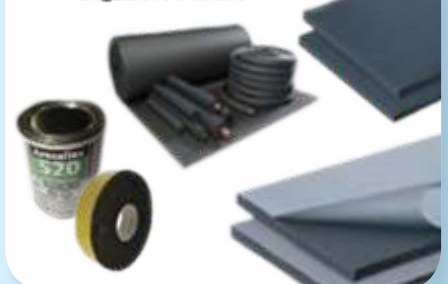
Cabinet Fan

- The RKB is compact with high capacity and very good efficiency.
- RKB is available with AC motor.
- Duct fan with rectangular connections.
- Proven performance and reliability.
- High capacity and very good efficiency.
- Impeller with backward curved blades.
- The external rotor motor has maintenance-free sealed ball-bearings.
- Fan housing is manufactured from galvanized sheet steel.
- Easy installation in any position.
- Authorized distributors of Ostberg.



In line Fan

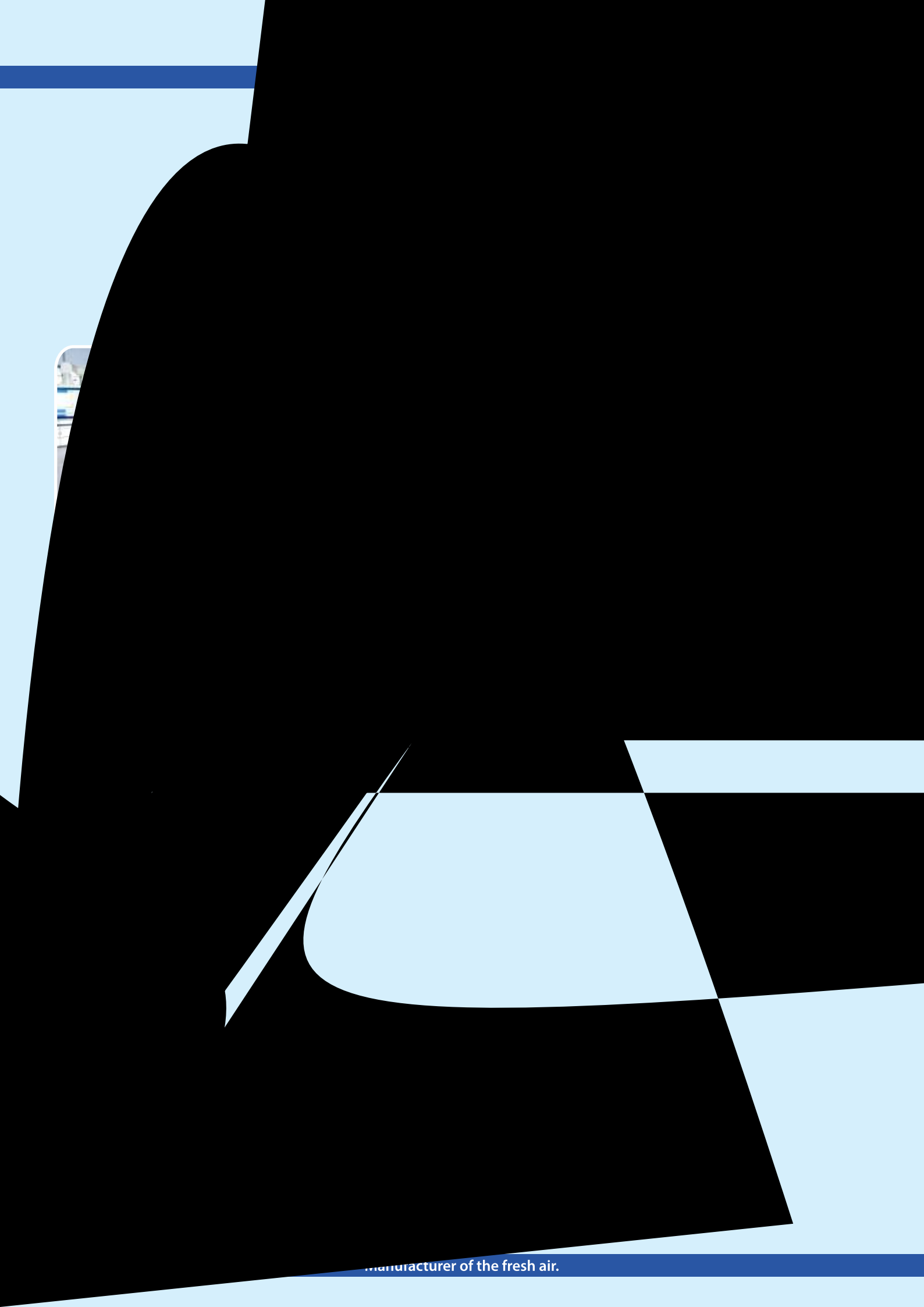
- The CK has proven performance and reliability. It is compact with high Capacity and efficiency with low sound levels.
- Duct fan with circular connection.
 - Compact with high capacity and efficiency.
 - Impeller with backward curved blades.
 - The external rotor motor has maintenance-free sealed ball-bearings.
 - Easy installation in any position.
 - Airflows up to 1,800 m³/h (0.52 m³/s).
 - Authorized distributors of Ostberg.



Thermal insulation

Accoflex W is tough and highly flexible closed-cell insulation material. The inner surface is powdered for easy and smooth sleeving.

- Cost effective.
- Easy to sleeve on tubes.
- Sweat control.
- Accoflex W is used to insulate ducts and pipes to prevent condensation & save energy.
- Authorized distributors of armacell.



Manufacturer of the fresh air.



Registered Office :

887/4, Nr. Kiran Motor Workshop, GIDC,
Makarpura, Vadodara - 390 010. Gujarat - India
Tel/Fax: +91 - 265 - 2630551, 2633641, 2651197
Email : info@fairflow.co.in, mktg@fairflow.co.in
www.fairflow.co.in

Sales Office Bangalore :

98, Prasant Extension, Near Hope Farm,
ITPB Road, whitefield, Bangalore - 560066
Cell - 91 - 93437 46445
91 - 96322 21417
91 - 80284 53246
Email : sales@fairflow.co.in

Sales Office Hyderabad :

Plot no. 105, Pragma Tools Colony,
Pet Bhasherabad, Quthbullaur, Jidimetla Vil,
Secunderabad, Hyderabad - 500055
Cell : 98499 03098
E-mail : sales.hyd@fairflow.co.in

Sales Office Mumbai :

B - 3/8/414, ONGC Colony,
Panvel, Navi Mumbai - 410221
Cell : 90999 60428
Email : sales.mumbai@fairflow.co.in